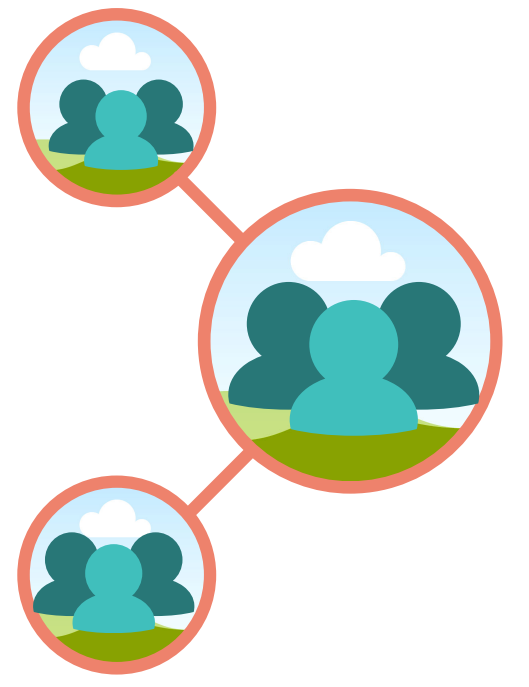


PRESENTING

ReLINC

Restoring Lives, Investing and Networking in Communities



is building capacity to offer support for providers that serve individuals who have been affected by incarceration through the use of the CareLinQ system that connects individuals to resources to help them thrive.

WHO BENEFITS FROM CARELINQ?

CareLinQ is ideal for use of system navigators, case/care managers, care coordinators or any program where interagency linkages would improve client services and the customer experience.

HOW ARE SERVICE REFERRALS MADE?

Service referrals are made using the community resource database maintained by 211 LA County, containing 50,000 programs and services.

WHAT PROGRAMS AND SERVICES ARE AVAILABLE?

Mental Health	Employment
Housing	Legal Aid
Education	Food assistant

And more!

If you would like to join our partnership please contact Evelyn Garcia at Evelyn@lareentry.org

